

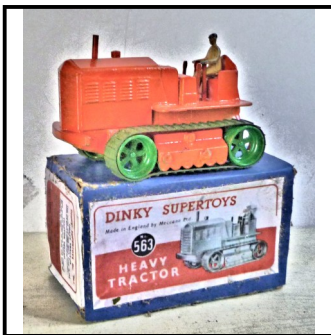
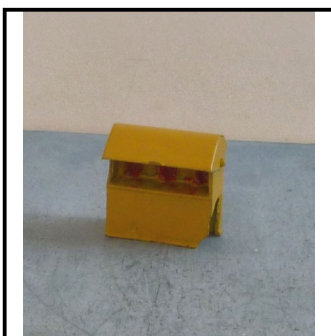
**Ref No:** 4R.701**Category:** Diecast Restorations - Dinky**Description:** 12c (750) Telephone Kiosk. Red with silver glazing. Restored to bright condition.**Price (£):** 10.00**Ref No:** 4R.702**Category:** Diecast Restorations - Dinky**Description:** 22e Military Tank, early issue with no baseplate. Lacks turret. Repainted body in bright green. Rarely seen item.**Price (£):** 7.50**Ref No:** 4R.703**Category:** Diecast Restorations - Dinky**Description:** 25r (420) Leyland 'Beaver' Forward-Control ('Cab-over') Lorry with Sideboards. Overall dark red with green wheel hubs. Restored.**Price (£):** 7.50**Ref No:** 4R.704**Category:** Diecast Restorations - Dinky**Description:** 25x (430) Commer Breakdown Truck. Restored in attractive livery of dark grey cab and blue superstructure. Red wheels. Body sides lettered 'Dinky Service'. Working rise-and-fall crane hook.**Price (£):** 15.00

**Ref No:** 4R.705**Category:** Diecast Restorations - Dinky**Description:** 25w (411) Bedford SWB rigid Lorry (non-tipping body), refinished in overall mid-green with black radiator grille and headlamps, silver front bumper.**Price (£):** 12.50**Ref No:** 4R.706**Category:** Diecast Restorations - Dinky**Description:** 27b (320) Halesowen Harvest Trailer. Tan body on red underframe, Draw-bar and tow-hook complete. with 2 extension ladders.**Price (£):** 10.00**Ref No:** 4R.707**Category:** Diecast Restorations - Dinky**Description:** 27f (344) Plymouth Estate Car ('Shooting Brake' Estate Wagon), Re-finished in beige with wood-effect panelling. Red wheel hubs.**Price (£):** 12.50**Ref No:** 4R.708**Category:** Diecast Restorations - Dinky**Description:** 28c (280) 'Bedford'-type Delivery Van. restored in overall red, one panel carrying 'Carter Paterson' logos. Silver-painted grille. Red wheel hubs.**Price (£):** 10.00

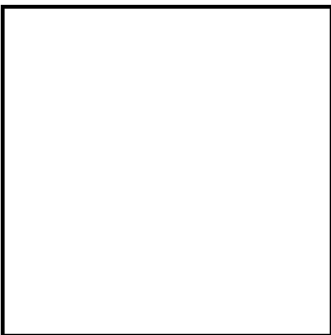
**Ref No:** 4R.709**Category:** Diecast Restorations - Dinky**Description:** 29b Streamlined Bus with 'Holland' Coachwork. Restored in light grey with blue wheel spats. No rear window.**Price (£):** 17.50**Ref No:** 4R.710.**Category:** Diecast Restorations - Dinky**Description:** 29b Streamlined Bus with 'Holland' Coachwork. Restored in peppermint green with darker green wheel spats. No rear window.**Price (£):** 17.50**Ref No:** 4R.711RB**Category:** Diecast Restorations - Dinky**Description:** 29c (290) Double-deck Bus. Duo-tone green and cream with 'Dunlop - World's Master Tyre' advertisements. Flared front wings, roof box, no steps. AEC grille. A 'passable' repaint. In a photocopy box**Price (£):** 12.50**Ref No:** 4R.712**Category:** Diecast Restorations - Dinky**Description:** 30h (253) Daimler Ambulance. Restored to original cream with red crosses and red wheel hubs. No window glazing.**Price (£):** 12.50

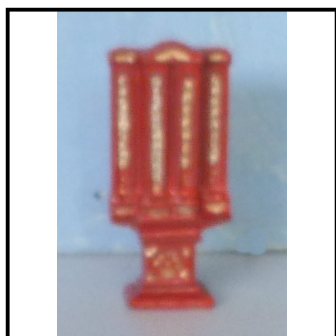
**Ref No:** 4R.713**Category:** Diecast Restorations - Dinky**Description:** 38f (105) Jaguar SS Open Sports Tourer. Restored in 'Royal' blue with grey interior seating.**Price (£):** 12.00**Ref No:** 4R.714**Category:** Diecast Restorations - Dinky**Description:** 40a (158) Riley 4-door Saloon. Restored in overall mid-green finish.**Price (£):** 12.50**Ref No:** 4R.715**Category:** Diecast Restorations - Dinky**Description:** 254 Austin FX-3 Taxi, restored in early-issue overall yellow with black luggage and driver's compartments. red-jacketed driver.**Price (£):** 12.50**Ref No:** 4R.716**Category:** Diecast Restorations - Dinky**Description:** 409 (521, 921) Bedford articulated Lorry with sideboards. Restored into attractive chrome-yellow livery with black chassis and detail. Red wheel hubs. Repair made to chassis at rear of cab.**Price (£):** 17.50

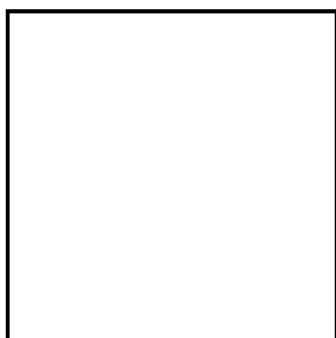
**Ref No:** 4R.717**Category:** Diecast Restorations - Dinky**Description:** 419 (533, 933) Leyland 'Comet' flatbed rigid-body Lorry, in primrose yellow, carrying 'Portland Blue Circle Cement' and 'Ferrocrete' markings. Nicely re-stored.**Price (£):** 16.50**Ref No:** 4R.718**Category:** Diecast Restorations - Dinky**Description:** Supertoys 431 (511, 911) Guy 'Vixen' 2-axle 4-ton Lorry with high-sided body. Restored in attractive duo-tone livery with red cab and chassis, mushroom-fawn body. Nice restoration**Price (£):** 30.00**Ref No:** 4R.719**Category:** Diecast Restorations - Dinky**Description:** Supertoys 504 Foden (2nd. Cab) 14-ton 8-wheel rigid Lorry with Tanker body. Restored into livery of red cab and underframe, mushroom-fawn tank unit with black ladders, as originally carried by Foden Mk. 1 Cab type. Red wheel hubs. Attractive colour combi**Price (£):** 35.00**Ref No:** 4R.720.**Category:** Diecast Restorations - Dinky**Description:** 555 Fire Engine, overall red with silver detail. No brigade markings. 2-stage swivelling Ladder. Good restoration**Price (£):** 15.00

**Ref No:** 4R.721**Category:** Diecast Restorations - Dinky**Description:** Supertoys 561 (961) Blaw-Knox Bulldozer. Red, with black attachments, driver in tan overalls. Black caterpillar tracks. Excellent restoration.**Price (£):** 24.50**Ref No:** 4R.722**Category:** Diecast Restorations - Dinky**Description:** Supertoys 561 Blaw-Knox Bulldozer, lacking blade and side-gear. Refurbished to original condition of red with black wheels and green caterpillar tracks. With driver in tan overall.**Price (£):** 12.50**Ref No:** 4R.723**Category:** Diecast Restorations - Dinky**Description:** Supertoys 563 Blaw-Knox Heavy Tractor (as Bulldozer without blade and side-gear). Refurbished to original condition of orange with green rubber caterpillar tracks. With driver in tan overall. In original box which is fragile and has replica picture paper**Price (£):** 19.50**Ref No:** 4R.724**Category:** Diecast Restorations - Dinky**Description:** 49e Oil Cabinet, with hinged lid. Restored in overall yellow without lettering. Body damaged.**Price (£):** 5.00

**Ref No:** 4R.726**Category:** Diecast Restorations - Tri-ang 'Spot-On'**Description:** 122 Milk Float, restored to original dark blue & white livery, with 'Express Dairies' decals. Lacks retaining chains. Some crates included.**Price (£):** 24.50**Ref No:** 4R.731**Category:** Diecast Restorations - Timpo**Description:** Long-bonnet Tractor Cab with semi-articulated Box Van Trailer. Restored into original overall dark blue livery with 'Pickford's Removals' decals.**Price (£):** 35.00**Ref No:** 4R.732**Category:** Diecast Restorations - Timpo**Description:** Long-bonnet Tractor Cab with semi-articulated Box Van Trailer. Restored into original livery of mid-blue tractor unit and duo-tone cream-&-blue semi-trailer carrying 'Wall's Ice Cream' decals**Price (£):** 35.00**Ref No:** 4R.733**Category:** Diecast Restorations - Timpo**Description:** Long-bonnet Tractor Cab with semi-articulated Low-Loader Trailer. Restored with cream tractor unit and red semi-trailer.**Price (£):** 30.00

**Ref No:** 4R.734**Category:** Diecast Restorations - Timpo**Description:** Long-bonnet Tractor Cab, with Petrol Tanker semi-Trailer. Restored with red cab unit and yellow tank semi-trailer.**Price (£):** 30.00**Ref No:** 4R.735**Category:** Diecast Restorations - Timpo**Description:** Long-bonnet Tractor Cab, with Petrol Tanker semi-Trailer. Restored with red cab unit and blue tank semi-trailer.**Price (£):** 30.00**Ref No:****Category:****Description:** Note: Tractor and semi-trailer units are inter-changeable.**Price (£):****Ref No:****Category:****Description:** Scroll to next entry**Price (£):**

**Ref No:** 4R.741**Category:** Diecast Restorations - Johillco (John Hill)**Description:** Platform Accessory - 4-chamber Dispensing Machine. Refurbished in overall red with gold detail.**Price (£):** 8.50**Ref No:** 4R.742**Category:** Diecast Restorations - Johillco (John Hill)**Description:** Platform Accessory - Ticket Issuing Machine. Two dispensing positions, Overall red with white label panel at each, surmounted by tri-angular pediment. Refurbished in overall red with gold detail and white label panels.**Price (£):** 7.50**Ref No:** 4R.743**Category:** Diecast Restorations - Johillco (John Hill)**Description:** Platform Accessory - Single-chamber Chocolate Dispensing Machine, red with 'Nestlé's' lettering embossed and other detail picked out in gold.**Price (£):** 8.50**Ref No:** 4R.746**Category:** Diecast Restorations - Crescent**Description:** 1272 Scammell Scarab 'Mechanical Horse' articulated Lorry (3-wheel Cab with detachable Semi-Trailer). Restored into late British Railways colours of cream cab and maroon trailer. Good condition.**Price (£):** 19.50

**Ref No:** 4R.751**Category:** Diecast Restorations - Kay & Co. (Ks)**Description:** Austin A40 'Devon' Saloon. Poor original copy of this model without open base, Refinished in bright red.**Price (£):** 10.00**Ref No:****Category:****Description:** end of Diecast & Lead restorations list**Price (£):**