

**Ref No:** 1S.01**Category:** Hornby 0-gauge Locomotive**Description:** 1930s. clockwork-driven No. 2 Special 4-4-2 Tank Locomotive, in lined-out L.M.S. crimson-lake finish, No. 6954. Exceptionally good condition.**Price (£):** 90.00**Ref No:** 1S.02**Category:** Hornby 0-gauge Coaches**Description:** No. 2 Special Pullman Saloon Coach 'Iolanthe', umber & cream, later mid-1930s issue with umber cant-rail (above windows), dark grey roof with blue ventilators. New window glazing fitted. Excellent condition with minor blemishes. Worthy of a box.**Price (£):** 69.50**Ref No:** 1S.03**Category:** Hornby 0-gauge Coaches**Description:** No. 2 Special Pullman Saloon-Luggage Composite Coach 'Verona', umber & cream, later mid-1930s. issue with umber cant-rail (above windows). Dark grey roof with blue ventilators. New window glazing fitted. Excellent condition with minor blemishes. Worthy of a box.**Price (£):** 69.50**Ref No:** 1S.04**Category:** Hornby 0-gauge Coaches**Description:** No. 2 Special Pullman Saloon-Luggage Composite Coach 'Verona', umber & cream, later mid-1930s. issue with umber cant-rail (above windows). Dark grey roof with blue ventilators. New window glazing fitted. Excellent condition, almost equally as good as above item. Again worthy of a box.**Price (£):** 69.50

**Ref No:** 1S.06B**Category:** Hornby 0-gauge Coaches

**Description:** 1930s. No. 2 bogie-mounted Side Corridor Composite Coach, 2nd./ Brake, No. 4804, tinprinted body in L.N.E.R. simulated teak, with white roof, on black underframe. Outstanding condition. In original box.

**Price (£):** 85.00**Ref No:** 1S.07B**Category:** Hornby 0-gauge Coaches

**Description:** 1930s. No. 2 bogie-mounted Side Corridor Composite Coach, 2nd./ Brake, tinprinted body in L.M.S. lined-out crimson-lake No. 6844, with grey roof, on black underframe. Outstanding condition. In original box.

**Price (£):** 85.00**Ref No:** 1S.08B**Category:** Hornby 0-gauge Coaches

**Description:** Post-1945 2-axle Compartment Coach, tinprinted lined-out maroon body lined-out in 'straw' and numbered 1st. & 3rd. on alternate doors, all on black underframe with grey roof. Superb condition. In a protective box

**Price (£):** 15.00**Ref No:** 1S.11B**Category:** Hornby 0-gauge Wagon Pack

**Description:** Pack of Qty. 4 2-axle Wagons, comprising two No.1 Timber Wagons (one pre-1939 red, one post-1945 black) and 2 No. 1 Lumber Wagons (both post-1945). All in excellent condition, in original boxes. Price for lot of 4

**Price (£):** 22.00

**Ref No:** 1S.12**Category:** Hornby 0-gauge Wagons

**Description:** Post-1945 2-axle Petrol Tank Wagon, silver tank body on black underframe, sides lettered 'National Benzole Mixture'. Excellent condition, with minimal faults. Deserving of a box.

**Price (£):** 16.50**Ref No:** 1S.13**Category:** Hornby 0-gauge Wagons

**Description:** Pre-1939 2-axle Petrol Tank Wagon, all-over Prussian-blue, sides lettered 'Redline-Glico'. 1930s. 'pressed-type' filler cap. Very good condition with bright polished finish. Very minor blemishes.

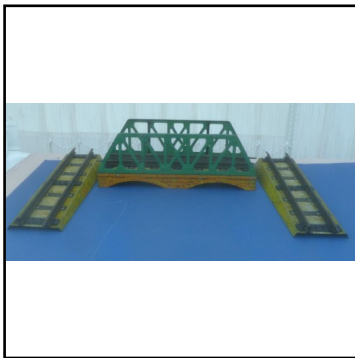
**Price (£):** 16.00**Ref No:** 1S.14**Category:** Hornby 0-gauge Wagons

**Description:** 1950s/1960s 2-axle Bulk Salt Wagon, chrome-yellow body on black underframe, sides lettered 'Saxa' in red crescent shape, with apexed grey fixed cover, one side having a hinged access door. Excellent condition. Deserving of a box. .

**Price (£):** 22.50**Ref No:** 1S.15**Category:** Hornby 0-gauge Wagons

**Description:** 1950s. 2-Axle Low-Sided Wagon, brown, with B.R. Insulated Meat Container. Both in superb condition. In excellent original box.

**Price (£):** 13.50

**Ref No:** 1S.16**Category:** Hornby 0-gauge Wagons**Description:** 1950s. No. 1 Crane Truck. Red jib on black base. Perfectly mint. In original box.**Price (£):** 12.50**Ref No:** 1S.21**Category:** Hornby 0-gauge Accessories**Description:** Pre-1939 Viaduct (or 'Girder Bridge'), comprising three sections (centre span with side girders and two ramp sections without side girders). 2-rail 'clockwork' track. Side girders are in later 'light green' finish. All in excellent condition.**Price (£):** 20.00**Ref No:** 1S.22B**Category:** Hornby 0-gauge Accessories**Description:** 1950s Platform Crane, on free-stranding buff plinth having white edging, red crane base with grey jib. Fully operational with 360° rotating action via crank-handle and similar cranked rise-fall action on crane hook. In original box with inner keeper. Very good condition.**Price (£):** 24.00**Ref No:** 1S.23B**Category:** Hornby 0-gauge Accessories**Description:** Pre-1939 Resistance Controller ('Speed Control Lever'), blue side frames, indicating 20v. operation. Superb condition, in original box.**Price (£):** 12.50

**Ref No:** 1S.24**Category:** Hornby 0-gauge Accessories

**Description:** 1920s. No. 2 Signal Cabin 'Windsor'. Tinplate construction, in pleasing 'pastel' colours of cream and light orange, with green roof. Hinged rear portion of roof facilitates insertion of lever frame if desired. Excellent condition

**Price (£):** 14.00**Ref No:** 1S.25B**Category:** Hornby 0-gauge Accessories

**Description:** 1920s. No. 1 Buffer Stop, finished in subdued gloss green with red beam. Superb condition. In unusual early red box.

**Price (£):** 7.00**Ref No:** 1AS.01**Category:** French Hornby 0-gauge

**Description:** 1930s Type 1-E 2-axle Coach/Van, attractive bright red body with straw lining, lettered 'Postes et Telegraphes', on black underframe and with white roof. Excellent condition. Rarely available item.

**Price (£):** 35.00**Ref No:** 1AS.02**Category:** French Hornby 0-gauge

**Description:** 1920s/1930s. 2-axle Single Flask Wine Wagon, with Vigie Hut which has a hinged access door. Green wagon body with red flask and vigie. Open axle frames, drop-link couplings. Good condition.

**Price (£):** 18.50



**Ref No:** 1AS.03PB**Category:** 'Hachette' modern reproduction of French-Hornby 0-gauge**Description:** 1990s. French issue reproduction in tinplate of French Hornby M-Series 0-4-0 clockwork-driven 0-4-0 Tender Locomotive No. 3-1225. Superb condition ,in original (low quality) carton. Currently paired with incorrect English Hornby M-Series Tender No 3435.**Price (£):** 19.00**Ref No:** 1AS.04**Category:** Bing 0-gauge**Description:** Short-wheel-base bogie-mounted 1st./3rd. Compartment Coach, in L.M.S. crimson, lined out in 'straw', with light-grey roof, all on black underframe. 4 opening doors each side. No running number. Bing-type couplings. Excellent condition.**Price (£):** 45.00

Picture  
to  
follow

**Ref No:** 1AS.05RB**Category:** 'Wessex' Series 0-gauge Wagons**Description:** 1980s. 2-axle Closed Van, in overall dark blue livery with grey roof on detailed black underframe, sides lettered 'Express Dairy Co - English Eggs' etc. Mint condition. In a protective box.**Price (£):** 17.50**Ref No:** 1AS.06RB**Category:** 'Wessex' Series 0-gauge Wagons**Description:** 1980s. 2-axle Closed Van, being a reproduction of the original Hornby type 'G.W.R. Mica B' Van, sides in dark grey with grey roof on black underframe. Superb condition. In a protective box.**Price (£):** 16.00

**Ref No:** 1AS.07**Category:** European tinplate Accessories (1)

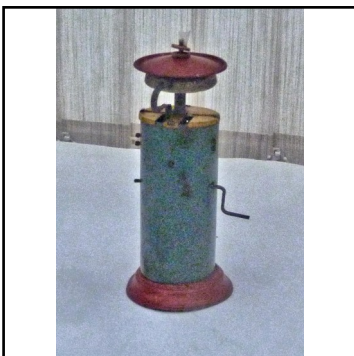
**Description:** J.D.N. (believed Distler) main-line 'Through' Station. Low-level platform having textured 'pebbled' surface in cream/brown, tinprinted back fences with serrated top edge, large continental-style main building with textured tiled roof having electric insulators atop and electric lamp on front panel, grey over-platform canopy, two opening doors at front. platform has an electric lamp standard and a non-electric signal post. Numerous advertisements. Platform length 14.5 inches (37cm).

**Price (£):** 40.00**Ref No:** 1AS.08**Category:** European tinplate Accessories (2)

**Description:** German (unidentified maker with DRGM copyright symbol) small 'Wayside' Station. Comprising low-level platform in grey, with small tinprinted building including bookstall and clock (lacks roof at present), close-boarded tin fence at rear with serrated top edge, detachable European-style semaphore signal. Buildings and fence carry numerous advertisements in English. Platform length 9 inches (23cm). Good condition.

**Price (£):** 20.00**Ref No:** 1AS.09**Category:** European tinplate Accessories (3)

**Description:** Unidentified maker (believed German for Dutch market?) tinplate-construction Train Destination Pointer Frame. A free-standing structure with gabled embossed 'tiled' canopy (similar to Distler station in previous entry), under which are three 'finger-pointers' which can be extended to and fixed in a horizontal position by means of cranked levers. All on mustard-coloured tin base. The destinations are Groningen, Arnhem Den Haag. Overall height 6.5 inches (15.5cm)

**Price (£):** 24.00**Ref No:** 1AS.10**Category:** European tinplate Accessories (4)

**Description:** Unidentified maker, believed German) tinplate-construction novelty 'Bell Tower'. Cylindrical pillar with a cupped top, the latter can be struck with a hammer by the turning of a crank handle on the side of the pillar. There is also a red-white disc on the side of the pillar which may have originally also had a mechanical turning action. Blue pillar with red base and cap. Overall height 5.5 inches (14cm). Good condition.

**Price (£):** 18.00

**Ref No:** 1AS.11**Category:** European tinplate Accessories (5)

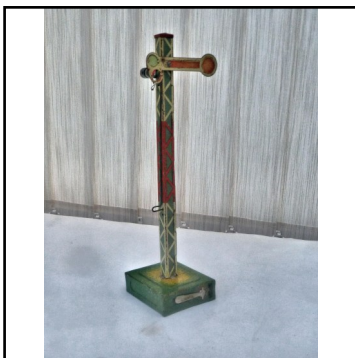
**Description:** Unidentified maker (believed German) tinplate-construction Railway Accessory: Electric Lamp with red bulb on cream and red pillar on base of same colours. Base has two electrical connection sockets. Pberal;l height 4.75 inches (12cm). Not tested electrically. Good condition.

**Price (£):** 17.50**Ref No:** 1AS.12**Category:** European tinplate Accessories (6)

**Description:** Unidentified maker (believed German) tinplate construction double-track Level Crossing on common base, with lifting traffic barriers operated by mechanical crank handle, with crossing-keeper's hut and one of two traffic warning 'X'-signs (lacks one and available one is detached). 'Grass-effect' base, green hut, grey warning pillar. Generally good condition.

**Price (£):** 20.00**Ref No:** 1AS.13**Category:** European tinplate Accessories (7)

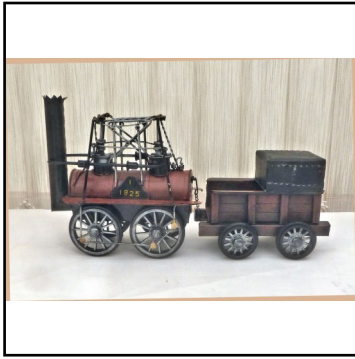
**Description:** Unidentified maker (believed German) tinplate construction two-part Border Guard/Customs Post, with manually-operated lifting barriers at each end. Grass-effect bases, sides are protected with lattice girders., Length of each section 4.5 inches (11.5cm). Generally good condition. Attractive colour scheme.

**Price (£):** 12.50**Ref No:** 1AS.14**Category:** European tinplate Accessories (8)

**Description:** Unidentified maker (believed German) continental-style Single-arm Semaphore Signal, with electric lamp. Tin-printed column on grass-effect square base which incorporates battery holder compartment. Signal arm position is adjustable by pegged control wire. Not tested electrically. Generally good condition.

**Price (£):** 16.00



**Ref No:** 1AS.15**Category:** Gauge 2 'Model of 'Locomotion'

**Description:** Unidentified maker: 'modern' Gauge 2 (2½" track) reproduction of the famous Stephenson locomotive 'Locomotion' of 1825, used on the Stockton & Darlington Railway. Non-powered and with imitation motion rods. An interesting 'shelf model' for the hobby room.

**Price (£):** 25.00**Ref No:** 3S.01B**Category:** 00-scale 'Mastermodels'

**Description:** No. 45 Coal Office. Attractive pent-roof lineside (Goods Yard) Hut, overall grey with red-brick-effect chimney at rear, non-opening door at front, un-glazed window at front and rear, sign-board atop roof. In original box.

**Price (£):** 12.50**Ref No:** 3S.02B**Category:** 00-scale 'Mastermodels'

**Description:** No. 45 Coal Office. Attractive pent-roof lineside (Goods Yard) Hut, overall grey with red-brick-effect chimney at rear, non-opening door at front, un-glazed window at front and rear, sign-board atop roof. Some restoration. In replica box.

**Price (£):** 7.50**Ref No:** 3S.03P**Category:** 00-scale card & plastic Station Kit

**Description:** 'Prototype Models' card and plastic kit of L.M.S. Country Station, based on Grindleford in The Hope Valley, Derbyshire. Unstarted, in original packaging, with instruction documents.

**Price (£):** 7.50

**Ref No:** 4S.01B**Category:** Diecasts

**Description:** Dinky Toys No. 571 Coles Mobile Crane. Rich 'chrome' yellow with black base. Good condition, some sharp edges re-touched. In good original box with paper-label lid.

**Price (£):** 25.00**Ref No:** 4S.02**Category:** Diecasts

**Description:** Dinky Toys 70d (731) miniature Twin-engined Fighter Aircraft (based on Messerschmitt ME109). Overall silver with two red three-bladed propeller blades. Fair/good condition.

**Price (£):** 11.50**Ref No:** 4S.03RB**Category:** Diecasts

**Description:** Corgi 258 TV/film-related model of 'The Saint's' Volvo P.1800 2-door Saloon. Overall white with red interior, 'Saint' logo on bonnet, driver, spun hubs. Mint condition. In reproduction fully-printed card box.

**Price (£):** 47.50**Ref No:** 4S.04RB**Category:** Diecasts

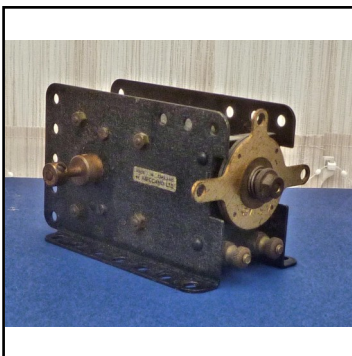
**Description:** Corgi 245 Buick 'Riviera' 2-door Saloon, in metallic gold with red interior. Excellent condition with minor under-surface paint defects. In reproduction fully-printed card box.

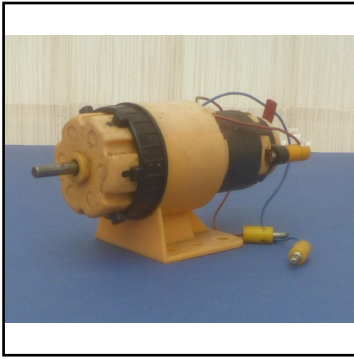
**Price (£):** 40.00

Picture  
to  
follow

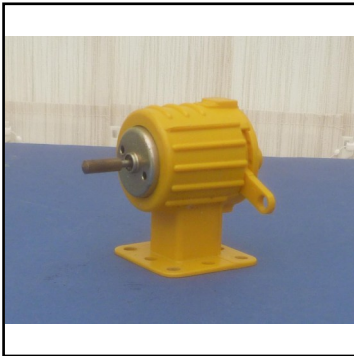
**Ref No:** 43S.05R**Category:** Diecasts - restored**Description:** Timpo ('Toy Importers') Articulated Pantechicon Van, restored into its original dark blue livery of 'Pickford's Removers & Storage'.**Price (£):** 20.00

Picture  
to  
follow

**Ref No:** 4S.06R**Category:** Diecasts - restored**Description:** Timpo ('Toy Importers') Articulated Pantechicon Van, restored into its original yellow livery of 'Bishop's Move' removers & Storage.**Price (£):** 20.00**Ref No:** 5S.01B**Category:** Novelties**Description:** V.I.P. (Victory Industries, Guildford): Plastic-moulded and metal battery-operated operational model of 'Conveyancer' Fork-lift Truck. Complete with forks, crane hook, several pallets and two cardboard fully-printed shipping containers. Several operative features (lift, forward/reverse, etc). With original documentation. In original box which was somewhat distressed and has been repaired and strengthened. Operates by three Type D batteries, but not tested electrically.**Price (£):** 55.00**Ref No:** 5S.02**Category:** Meccano system**Description:** E15R electric Side-frame Motor. Operates from either 12v or 20v. Tested and oiled . Smooth and powerful runner.**Price (£):** 30.00

**Ref No:** 5S.03**Category:** Meccano system

**Description:** Powerdrive 4.5v-12v Electric Motor, with 6-speed ratio Gearbox incorporated. Tested working. Yellow moulded case which has faded on top surface.

**Price (£):** 22.50**Ref No:** 5S.04**Category:** Meccano system

**Description:** Reversible 4.5v dc Electric Motor (without gearbox). Moulded yellow case. Switch intact (fragile, frequently found broken).

**Price (£):** 6.00**Ref No:** 5S.05**Category:** Meccano system

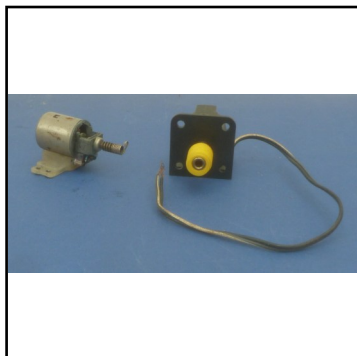
**Description:** Part No. 138 Ship's Funnel, with steam pipe attached. Restored to original colours of red with black top section. Qty. 2. Price each.

**Price (£):** 5.00**Ref No:** 5S.06B**Category:** Meccano system

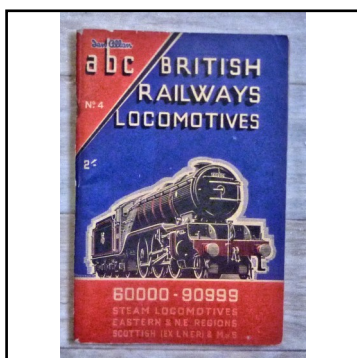
**Description:** Set (Outfit) No. 6, 1960s, issued at the stage of the move away from standard red-green, to include new colours such as blue road wheels, etc. Nice condition, in two-tier polystyrene trays within outer card-board box. Checked as complete, with manual of suggested models?.

**Price (£):** 27.50

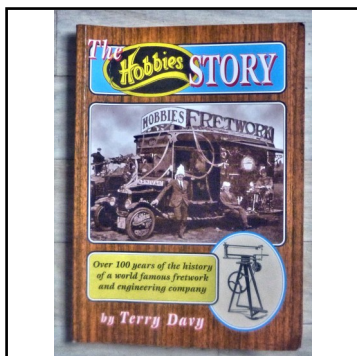


**Ref No:** 5S.07**Category:** Electric Motors

**Description:** Two different small electric motors, suitable for use in models. Both without identification markings. One has a Meccano plastic-covered worm on the output shaft. Price e each

**Price (£):** 4.00**Ref No:** 6S.01**Category:** Literature

**Description:** Ian Allan ABC of B.R. Locomotives (steam & EMUs) - Eastern Region. Complete and unmarked. May 1949.

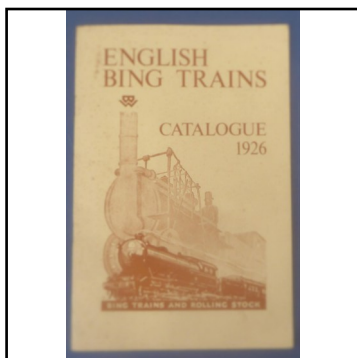
**Price (£):** 4.50**Ref No:** 6S.02**Category:** Literature

**Description:** The 'Hobbies' Story (Terry Davy, Nostalgia Publications). 1st.. edition 1998. A history of the famous Dereham company (1887-1968) and a subsequent re-birth. 128 pp. softback. Profusely illustrated (monochrome), Also contains a brief history of the development of 'Bowman' and 'Mamod' models.

**Price (£):** 4.50**Ref No:** 6S.03**Category:** Literature

**Description:** Ian Allan ABC of British Railways Locomotives, Part 2 - Southern Region. Summer 1959 edition. A few neat under-linings, but generally unmarked and in very good condition..

**Price (£):** 3.50

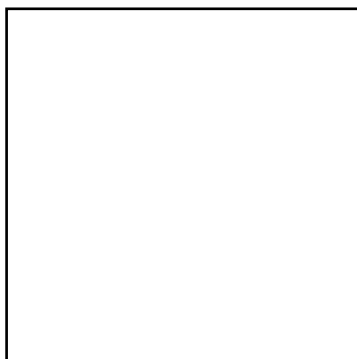


**Ref No:** 6S.04

**Category:** Literature

**Description:** English Bing Trains'. A reproduction of a 20-page catalogue issued in 1926. All items marketed in Britain are listed, illustrated and priced, including 0-gauge, miniature Table Top systems, stationary engines, traction engines and 'magic lanterns'. Approx. A5-size, card covers. Published by Cranbourn Press, London .

**Price (£):** 4.50



**Ref No:** end of supple-

**Category:**

**Description:**

**Price (£):**