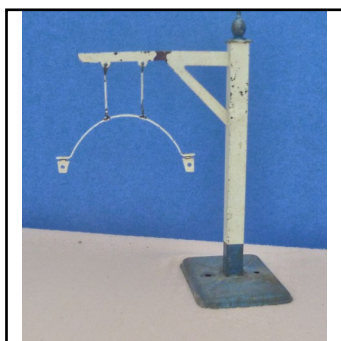
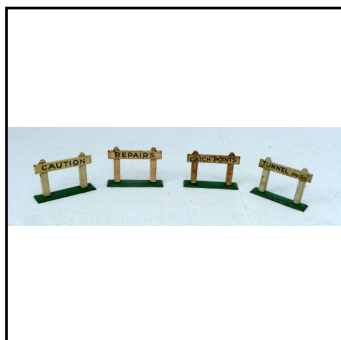
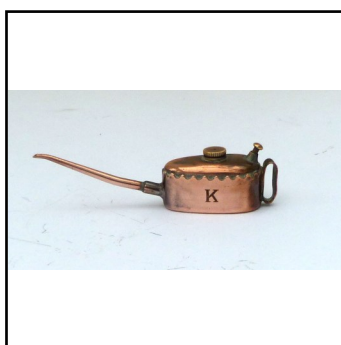


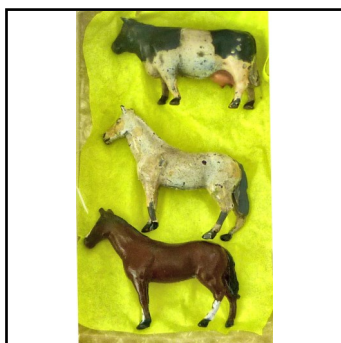
**Ref No:** 1S.01**Category:** Hornby 0-gauge Locomotives**Description:** 1930s Type EM3 2-v 3-rail electric 0-4-0 Tank Locomotive, tinprinted in L.M.S. maroon, with 'straw' lining. Later version, fitted with cylinders and motion rods. Nice condition.**Price (£):** 87.50**Ref No:** 1S.02**Category:** Hornby 0-gauge Locomotives**Description:** 1940s-1950s No. 501 clockwork-driven 0-4-0 Tender-type Locomotive, in L.M.S. lined-out maroon with satin finish, No. 5600. Outstanding condition with minimal blemishes. Loco. supplied in a protective box. Tender in original box.**Price (£):** 69.00**Ref No:** 1S.03**Category:** Hornby 0-gauge Locomotives**Description:** 1950s. No. 51 clockwork-driven 0-4-0 Tender-type Locomotive, in B.R. gloss-finish lined-out green livery, No. 50153. Outstanding condition with no observed defects. Loco. supplied in a protective box. Tender in original box.**Price (£):** 74.99**Ref No:** 1S.06B**Category:** Hornby 0-gauge Coach Pack (all boxed)**Description:** Rake of 3 x 1950s. 2-axle Type 41 Coaches, in B.R. lined-maroon, comprising two x 1st/2nd Composites and one Passenger Brake Van. All in excellent condition and in original boxes. Window glazing slightly dulled on one side of Brake Van, otherwise all windows very bright. Price for lot of 3**Price (£):** 39.00

**Ref No:** 1S.11B**Category:** Hornby 0-gauge Wagon Pack (all items boxed)**Description:** Qty. 5 post-1947 Wagons, all boxed, comprising: (a) Low-sided (B.R.-E) + Meat Container; (b) Low-sided (B.R.) + Cable Drum; (c) Cattle Wagon NE; (d) Gas Cylinder Wagon; (e) Goods Brake N.E. 10T. Price for lot of 5**Price (£):** 40.00**Ref No:** 1S.16**Category:** English Hornby 0-gauge accessories**Description:** 1950s Island Platform, cream surfaces with white lining along edges, brick effect on rail-facing edges, green-roofed canopy, swinging name-board 'Wembley'. With two matching end-ramps. Excellent condition. without box.**Price (£):** 75.00**Ref No:** 1S.17**Category:** English Hornby 0-gauge accessories**Description:** 1930s. No. 2E Electric Lamp Standard, wired for illumination. Blue base, finial and shade, base fitted with later-type 'plug' terminals. Excellent condition, without box.**Price (£):** 65.00**Ref No:** 1S.18B**Category:** English Hornby 0-gauge accessories**Description:** 1950s. Platform Crane, cream plinth with white edges, red super-structure and grey jib. Mint condition. In original box.**Price (£):** 33.00

**Ref No:** 1S.19B**Category:** English Hornby 0-gauge accessories**Description:** 1920s. No. 2 Single-arm Signal, 'Home' (red) arm. Black base and non-ribbed ladder, base carries early 'Meccano Ltd.' transfer and is also embossed 'Hornby Series'. In original 'dotted border' deep-lid box, which is slightly distressed.**Price (£):** 27.50**Ref No:** 1S.20**Category:** English Hornby 0-gauge accessories**Description:** 1930s. Loading Gauge. White pillar and radius arm, blue base and finial. Gauge arm is complete with hinged end-flaps. Base surface restored.**Price (£):** 15.00**Ref No:** 1S.21**Category:** English Hornby 0-gauge accessories**Description:** 1 item from 1930s Railway Accessories Set No. 1: Porter's Barrow ('Sack Truck'). Overall green with cast grey wheels. The 'set' can be assembled using items listed separately.**Price (£):** 10.00**Ref No:** 1S.22**Category:** English Hornby 0-gauge accessories**Description:** 1930s Railway Accessories Set No. 2: 2-axle Trolley with 6 Milk Cans. Blue truck, cans have lost their lustre. Otherwise good condition.**Price (£):** 20.00

**Ref No:** 1S.23**Category:** English Hornby 0-gauge accessories**Description:** Railway Accessories No. 2: Milk Cans and 2-axle Trolley. Buff Trolley. 5 Churns which have lost their lustre. Without box**Price (£):** 20.00**Ref No:** 1S.24**Category:** English Hornby 0-gauge accessories**Description:** 2 items from 1924-1935 Railway Accessories Set No. 3: (a) Uncommon tinprinted Letter Box, 'G.R.'. without 'Hornby Series' trade-mark. (b) Platform Ticket-issuing Machine, red with gold detail. Both in good condition.**Price (£):** 20.00**Ref No:** 1S.25B**Category:** English Hornby 0-gauge accessories**Description:** Railway Accessories No. 7: Watchman's Hut with accessories, in dotted-border lift-lid box.**Price (£):** 33.00**Ref No:** 1S.26B**Category:** English Hornby 0-gauge accessories**Description:** Railway Accessories No. 7: Watchman's Hut with accessories, in end-flap box.**Price (£):** 33.00

**Ref No:** 1S.27**Category:** English Hornby 0-gauge accessories**Description:** 4 Items from 1939 Railway Accessories Set No. 8 'Notice Boards' (Instructions & Information to Drivers). Comprising 'Caution', 'Repairs', 'Catch Points' and 'Tunnel'. White background with black lettering, white posts, green-coated base. Price for lot of 4.**Price (£):** 20.00**Ref No:** 1S.28**Category:** English Hornby 0-gauge accessories**Description:** 4 Items from 1920s-1930s Railway Accessories Set No. 8 'Notice Boards' (Instructions & Information to Drivers). Comprising 'Caution' (2), 'Tunnel' and 'Catch Points'. White background with black lettering, white posts, first three have green-coated base, fourth item has earlier blue-coated base. Price for lot of 4.**Price (£):** 18.00**Ref No:** 1S.29**Category:** English Hornby 0-gauge accessories**Description:** 1930s. Lubrication Accessory: 'K' Type Oil Can, with working spring mechanism. Polished copper, with soldered joints. Miniature of that used on full-size railways, made by the same manufacturer (Kaye's of Leeds). Scarce item.**Price (£):** 90.00**Ref No:** 1S.30**Category:** English Hornby 0-gauge accessories**Description:** 1930s Wagon or Crane Load: Sand-filled Hessian Sacks, front surface tamper-printed 'Meccano - Made in England'. Qty. 3. Excellent condition, white. Price each**Price (£):** 4.50

**Ref No:** 1S.31**Category:** English Hornby 0-gauge accessories**Description:** 1930s Wagon or Crane Load: Sand-filled Hessian Sacks, front surface tampo-printed 'Meccano - Made in England'. Qty. 3. Soiled appearance. Price for lot of 3**Price (£):** 7.50**Ref No:** 3S.01**Category:** 00-railway items**Description:** Mastermodels No. 65: Coal Bunker 'Charrington's'. Grey with green signboard. Nice condition. Without coalman or weighing scales.**Price (£):** 7.50**Ref No:** 4S.01**Category:** Diecasts**Description:** Dinky Toys: Part of Set 002 Farmyard Animals (1950s). Comprising 2a Horse, head slightly turned. Qty. 2 (one chestnut, one grey); 2b Holstein Cow (white with black patches). Excellent condition. Price for lot of 3**Price (£):** 65.00**Ref No:** 4S.02**Category:** Diecasts**Description:** Dinky Toys 35d Austin Seven Open 2-seater Tourer. Yellow with silver grille. Smooth wheel hubs. Lacks wire windshield frame. Otherwise very good condition**Price (£):** 35.00

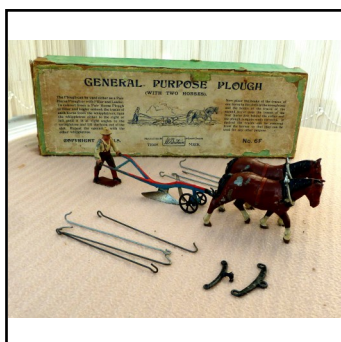
**Ref No:** 4S.03**Category:** Diecasts**Description:** Dinky Toys 35d Austin Seven Open 2-seater Tourer. Blue with plain black wheel hubs. Lacks wire windshield frame. Otherwise good condition**Price (£):** 35.00**Ref No:** 4S.04**Category:** Diecasts**Description:** Dinky Toys 38d Alvis Sports Open Tourer, maroon with grey interior. black ridged wheel hubs. Scuffed**Price (£):** 17.50**Ref No:** 4S.05**Category:** Diecasts**Description:** Dinky Toys 40a Riley saloon. Lot of 3 in different colours: (a) grey-olive body. Early base-plate, slightly 'pitted' roof, un-numbered with small lettering. Black wheels, ridged hubs; (b) cream, with green wheel hubs. Numbered base-plate. Very small paint chips; (c) green, with green wheel hubs. Early-issue un-numbered base-plate. Scuffed body. Price for lot of 3**Price (£):** 50.00**Ref No:** 4S.06**Category:** Diecasts**Description:** Dinky Toys 43b Motor-cycle & Sidecar Combination, blue with black mud-guards 'R.A.C. Patrol'.**Price (£):** 25.00

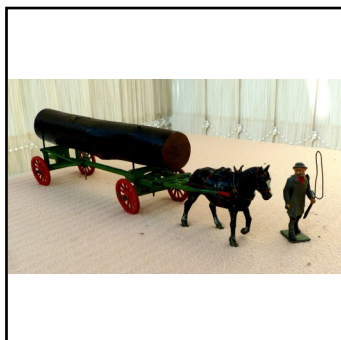
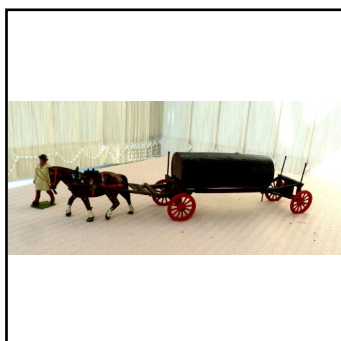
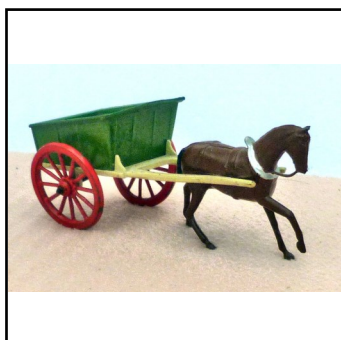
**Ref No:** 4S.07**Category:** Diecasts**Description:** Dinky Toys 44b Motor-cycle Combination 'A.A.'. Decals worn. Mudguards chipped.**Price (£):** 22.00**Ref No:** 4S.08**Category:** Diecasts**Description:** Dinky Toys 44c A.A. Patrol Man, standing at attention, saluting.**Price (£):** 15.00**Ref No:** 4S.08A**Category:** Diecasts**Description:** see also Section 5- Dinky Tinplate items**Price (£):****Ref No:** 4S.09**Category:** Diecasts**Description:** Dinky Toys 105g (382) Wheel-barrow. Sand exterior, red interior. Good condition. Handles intact.**Price (£):** 7.50

**Ref No:** 4S.10**Category:** Diecasts**Description:** Dinky Toys 107a (385) Porter's Barrow or Sack Truck.(Ramsay classifies as 'Farm &Garden').**Price (£):** 9.00**Ref No:** 4S.11B**Category:** Diecasts**Description:** Dinky Toys 472 Austin A40 Van, dark green, 'Raleigh Cycles'. Boxed. Model excellent, box slightly fragile.**Price (£):** 55.00**Ref No:** 4S.12**Category:** Diecasts**Description:** Dinky Toys 750 Telephone Box, 1950 issue, red with silver window panels. Excellent condition.**Price (£):** 12.00**Ref No:** 4S.13B**Category:** Diecasts**Description:** Dinky Supertoys 751 Hand-propelled Lawn Mower, green/red. Working blades. With grass box. With overall box. Mint condition. The largest-scale Dinky model.**Price (£):** 90.00

**Ref No:** 4S.14**Category:** Diecasts**Description:** Dinky Toys 752 Goods Yard Crane, light blue base, with steps, yellow jib. Minor chips on sharp edges, otherwise excellent. No box.**Price (£):** 12.50**Ref No:** 4S.15B**Category:** Diecasts**Description:** Dinky Toys 973 (formerly 752) Goods Yard Crane, light blue base, with steps, yellow jib. Mint, boxed, with inner keeper**Price (£):** 14.00**Ref No:** 4S.16B**Category:** Diecasts**Description:** Corgi 205 Riley 'Pathfinder' 4-door Saloon, red, with aluminium wheel hubs. Mint. Boxed.**Price (£):** 60.00**Ref No:** 4S.17B**Category:** Diecasts**Description:** Oxford Diecast 76CC001 Carlight 'Continental' 1-axle Towing Caravan, off-white. Mint. Boxed**Price (£):** 5.00

**Ref No:** 4S.18**Category:** Diecasts**Description:** Matchbox 'Models of Yesteryear' Y-3 1934 Riley 'MPH', metallic red, cream interior. As mint. Without box.**Price (£):** 7.50**Ref No:** 4LS.01B**Category:** Diecast - Britain's**Description:** Britains' 128F Fordson Major E27N Tractor, with Driver. Smaller version. (1:43 scale). Mint. Boxed**Price (£):** 135.00**Ref No:** 4LS.02B**Category:** Diecast - Britain's**Description:** Britain's 102V Petrol Pumps. 3 on white plinth: 'Esso' (red), 'Fina' (blue), 'Mobilgas' (red). Hose collar broken on 'Fina' pump. In original box with graphic design on lid**Price (£):** 95.00**Ref No:** 4LS.03B**Category:** Diecast - Britain's**Description:** Britain's 1334 Army Lorry, open platform tipping body with sideboards, hinged tail-gate, opening right-hand side cab door, with driver. Drab military green over-all. Boxed.**Price (£):** 125.00

**Ref No:** 4LS.06B**Category:** 'Lead' - Britain's**Description:** 4F Home Farm Series: Horse-drawn single-axle Tumbrel Cart, blue body and shafts, red wheels, grey horse, brown extension ladders. With Carter. Also with printed card advising care when handling. Excellent condition. Boxed**Price (£):** 45.00**Ref No:** 4LS.07**Category:** 'Lead' - Britain's**Description:** 5F Farm Waggon, double-horse-drawn, 2-axle Waggon, having dark green body and shafts, red spoked wheels. One grey horse, one black horse (both with saddle). With Carter holding whip. Excellent condition.**Price (£):** 60.00**Ref No:** 4LS.08**Category:** 'Lead' - Britain's**Description:** 5F Farm Waggon, double-horse-drawn, 2 axle Waggon. 2 Chestnut horses (both with saddle), waggon having grass-green body and shafts, with red detail, red spoked wheels. With 505 Carter holding whip.**Price (£):** 55.00**Ref No:** 4LS.09B**Category:** 'Lead' - Britain's**Description:** 6F General Purpose Plough, with 2 Chestnut Field Horses, traces, whippetrees and Ploughman. Horses can be aligned in-line or abreast. Excellent condition. Boxed.**Price (£):** 75.00

**Ref No:** 4LS.10**Category:** 'Lead' - Britain's**Description:** 12F Double-Horse-drawn Log Carrier. 2-axle Articulated Trailer and shafts in grass-green, red-spoked wheels, long log, black horse with saddle, black horse without saddle, traces, with 563 Stable Lad (Groom).**Price (£):** 65.00**Ref No:** 4LS.11**Category:** 'Lead' - Britain's**Description:** 12F Double-Horse-drawn Log Carrier. 2-axle Articulated Trailer and shafts in mid-brown with red-spoked wheels, chestnut horse, with saddle, black horse without saddle, traces, with 563 Stable Lad (Groom).**Price (£):** 65.00**Ref No:** 4LS.12**Category:** 'Lead' - Britain's**Description:** 40F Single Horse-drawn 1-axle Farm Cart, green body with cream shafts, smaller red-spoked wheels, mid-chestnut-brown horse 'stepping'. Excellent condition.**Price (£):** 35.00**Ref No:** 4LS.13**Category:** 'Lead' - Britain's**Description:** 40F Single-horse-drawn Small Farm Cart (Tumbrel). Blue cart body with grey shafts and red wheels, chestnut horse. Excellent condition.**Price (£):** 20.00

**Ref No:** 4LS.14**Category:** 'Lead' - Britain's**Description:** 45F Single-horse-drawn 1-axle Milk Float, latter having green body with name-board over wheels and on front panel, step at rear, red 12-spoke wheels, chestnut horse, some paint loss on horse.**Price (£):** 37.50**Ref No:** 4LS.15**Category:** 'Lead' - Britain's**Description:** 45F Single Horse-drawn 1-axle Milk Float, latter having mid-blue body with name-board over wheels and on front panel, step at rear, cream shafts, red 12-spoke wheels, chestnut horse. Good condition.**Price (£):** 37.50**Ref No:** 4LS.16**Category:** 'Lead' - Britain's**Description:** 45F Single Horse-drawn 1-axle Milk Float, latter having blue-green body and shafts, with nameboard over wheels and over front panel, fine 16-spoke red wheels, mid-chestnut-brown horse. Possibly repainted Float.**Price (£):** 33.00**Ref No:** 4LS.17**Category:** 'Lead' - Britain's**Description:** 501 Stout Farmer, in bowler hat, red waistcoat. Moving right arm, with stick.**Price (£):** 7.50

**Ref No:** 4LS.18**Category:** 'Lead' - Britain's**Description:** 503 Farmer's Wife, standing as if walking, green dress and head covering trimmed with pink, white apron. Moving right arm holding umbrella, fixed left arm holding basket**Price (£):** 6.50**Ref No:** 4LS.19**Category:** 'Lead' - Britain's**Description:** 506 Shire Horse, 'more 'solid' type with 'plodding step'; Qty. 2: (a) black with white nose & hooves, (b) cremello (cream) with light brown hooves. Both have basic harness in orange. Price each**Price (£):** 7.50**Ref No:** 4LS.20**Category:** 'Lead' - Britain's**Description:** 507 Shire Colt, chestnut upper, pink-ish lower), raised head and tail**Price (£):** 6.00**Ref No:** 4LS.21**Category:** 'Lead' - Britain's**Description:** 508 Cow, standing. Fresian (white with black patches) Qty. 2, and another, white with brown patches. Qty. 1. Total 3. Price each**Price (£):** 8.00



Ref No: 4LS.22

Category: 'Lead' - Britain's

Description: 509 Calf (Heifer), white with brown patches, standing. Qty. 2. Price for pair

Price (£): 7.00



Ref No: 4LS.23

Category: 'Lead' - Britain's

Description: 510 Sheep, white with black areas, standing. Qty. 4, two having longer legs than the other two. Price for 4, or can be sold separately.

Price (£): 10.00

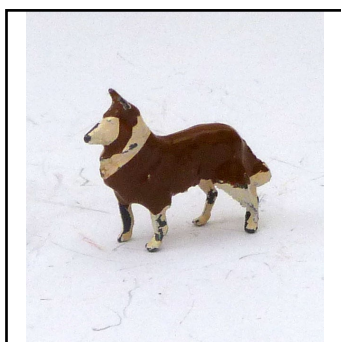


Ref No: 4LS.24

Category: 'Lead' - Britain's

Description: 511 Sheep, grey, black snout and hooves, grazing. Qty. 2 light grey + qty. 1 medium grey. Price for 3

Price (£): 7.50

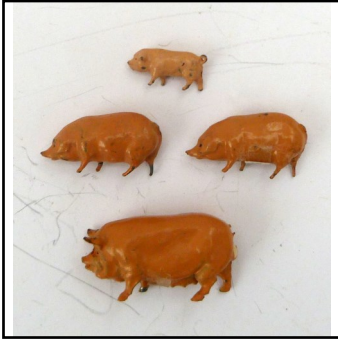


Ref No: 4LS.25

Category: 'Lead' - Britain's

Description: 513 Dog, collie, medium, white-brown, standing

Price (£): 5.00



Ref No: 4LS.26

Category: 'Lead' - Britain's

Description: 514 Pigs, pink. 1 Boar, 2 Sows, 1 Piglet. Price for lot of 4, or can be sold separately.

Price (£): 15.00



Ref No: 4LS.27

Category: 'Lead' - Britain's

Description: 515 Turkey, Qty. 2. Price for pair

Price (£): 5.00



Ref No: 4LS.28

Category: 'Lead' - Britain's

Description: 519 Angry Gander, cackling, cream/orange. Qty. 2. Price each

Price (£): 4.00

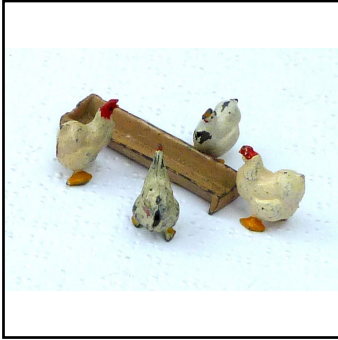


Ref No: 4LS.29

Category: 'Lead' - Britain's

Description: 525 Fallen Tree

Price (£): 4.50

**Ref No:** 4LS.30**Category:** 'Lead' - Britain's**Description:** 529 Feeding Trough, small (no legs), buff, with Qty. 4 x 517-8 Hens. Price for lot**Price (£):** 9.50**Ref No:** 4LS.31**Category:** 'Lead' - Britain's**Description:** 529 Feeding Trough, small, (2 supports), grey, no poultry.**Price (£):** 4.50**Ref No:** 4LS.32**Category:** 'Lead' - Britain's**Description:** 531 Milk-Maid, pink dress, white collar, milk pail with handle on head, steadied by left hand, right hand at waist.**Price (£):** 8.00**Ref No:** 4LS.33**Category:** 'Lead' - Britain's**Description:** 532 Milk-Maid, yellow dress with black collar, left hand on waist, right arm hanging at side holding bucket.**Price (£):** 8.00



Ref No: 4LS.34

Category: 'Lead' - Britain's

Description: 534 Calf, white with brown patches, lying. Qty. 3. Price for 3

Price (£): 10.00



Ref No: 4LS.35

Category: 'Lead' - Britain's

Description: 537 Milk-Maid, buff dress trimmed with red, including head covering, seated on stool in 'milking' position.

Price (£): 8.00



Ref No: 4LS.36

Category: 'Lead' - Britain's

Description: 538 Cow, lying, head turned. Qty. 2 white with black patches; Qty. 2 red (brown) with white patches. Price each

Price (£): 6.00



Ref No: 4LS.37

Category: 'Lead' - Britain's

Description: 539 Cow, red (brown) with white patches, red (brown) legs, grazing.

Price (£): 7.00



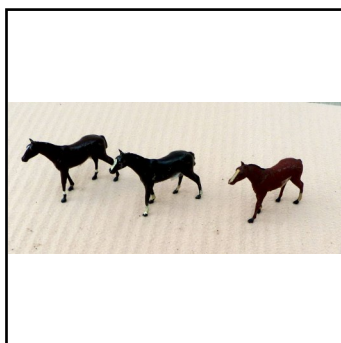
Ref No: 4LS.38
Category: 'Lead' - Britain's
Description: 542 Corn (Wheat) Sheaves, stacked together. Qty. 4. Price each

Price (£): 3.50



Ref No: 4LS.39
Category: 'Lead' - Britain's
Description: 547 Gardener, blue open waist-coat, white shirt darker blue trousers (non-moving arms), pushing green Wheel-barrow.

Price (£): 14.00



Ref No: 4LS.40
Category: 'Lead' - Britain's
Description: 550 Cob, chestnut (light-red-brown, matt) with long white snout, and two white leg bands, standing

Price (£): 6.00



Ref No: 4LS.41
Category: 'Lead' - Britain's
Description: 551 Scarecrow, flapping shirt no head, brown pole, green base. Lacks originally provided hat. Qty. 2 (one with pale blue shirt, one with tan shirt. Price each

Price (£): 7.50



Ref No: 4LS.42
Category: 'Lead' - Britain's
Description: 552 Donkey fawn with grey over-back. walking

Price (£): 6.50



Ref No: 4LS.43
Category: 'Lead' - Britain's
Description: 552 Donkey, cream-grey, with grey over-back, standing, static. Left foreleg incomplete

Price (£): 3.00



Ref No: 4LS.44
Category: 'Lead' - Britain's
Description: 555 Aged Villager, male, grey jacket, green trousers, pink shirt, moving right arm holding pipe. Seated on 567 Log Bench.

Price (£): 10.00



Ref No: 4LS.45
Category: 'Lead' - Britain's
Description: 555 Aged Villager, male, brown jacket, blue shirt, moving right arm holding pipe, together with 556 Aged Villager, female, blue dress with white collar, moving right arm, both seated on 567 Log Bench.

Price (£): 14.00



Ref No: 4LS.46

Category: 'Lead' - Britain's

Description: 558 Village Boy with stick (Farm Cow-hand), red jacket, tan trousers, black boots, deep trilby hat, blue 'kerchief, stick on MRA

Price (£): 22.50



Ref No: 4LS.47

Category: 'Lead' - Britain's

Description: 569 Dog Kennel, brown, green roof. with 513 Collie dog, black and white.

Price (£): 9.50



Ref No: 4LS.48

Category: 'Lead' - Britain's

Description: 569 Dog Kennel, brown, green roof. with Hill (254) Bulldog

Price (£): 10.00



Ref No: 4LS.49

Category: 'Lead' - Britain's

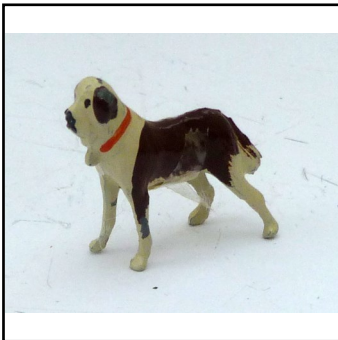
Description: 573 Bull, red-brown, aggressive stance, tail curled to body, plus 573 Bull, Holsten (white/black), aggressive stance, tail curled to body. Price each

Price (£): 10.00



Ref No: 4LS.50
Category: 'Lead' - Britain's
Description: 575 Dovecote on pillar, round white cote with red peaked roof.

Price (£): 8.00



Ref No: 4LS.51
Category: 'Lead' - Britain's
Description: 576 Dog, St. Bernard, large, white with brown patches

Price (£): 6.50



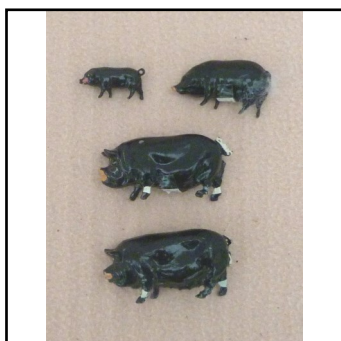
Ref No: 4LS.52
Category: 'Lead' - Britain's
Description: 582 Signpost, single-arm, no destination marked. Qty. 2. Price each.

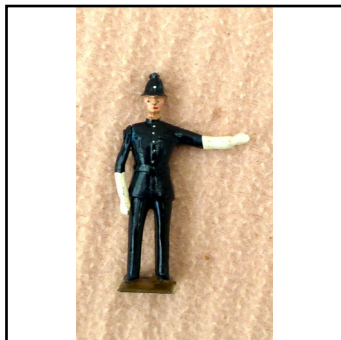
Price (£): 7.50



Ref No: 4LS.53
Category: 'Lead' - Britain's
Description: 588 Milk Can (Churn). Qty. 2, plus 1 larger unmarked). Price for 3

Price (£): 9.00

**Ref No:** 4LS.54**Category:** 'Lead' - Britain's**Description:** 593 Country Clergyman ('Preacher Man'), with beard, wearing hat, MRA holding bible.**Price (£):** 15.00**Ref No:** 4LS.55**Category:** 'Lead' - Britain's**Description:** 596 Berkshire Boars, Sows and Piglets, all black. Total 4. Price for lot or can be sold separately.**Price (£):** 20.00**Ref No:** 4LS.56**Category:** 'Lead' - Britain's**Description:** 599 Cow, Jersey, tan upper, cream lower, standing**Price (£):** 7.00**Ref No:** 4LS.57**Category:** 'Lead' - Britain's**Description:** 602 Foal, chestnut (red-brown), white snout, 2 white leg bands, tail protruding (one curled, one tufted), standing. Qty. 2, plus another with tail broken. Price each if complete**Price (£):** 5.00



Ref No: 4LS.58
Category: 'Lead' - Britain's
Description: 621 Policeman, on point duty (traffic control). left arm outstretched.

Price (£): 7.50



Ref No: 4LS.59
Category: 'Lead' - Britain's
Description: 624 Section of Flint Stone Wall. Cream with green 'grass' at top and base. Qty. 3.
Price for lot

Price (£): 10.00



Ref No: 4LS.60
Category: 'Lead' - Britain's
Description: 649 Field Horse, black with white nose & hooves, orange basic harness (no saddle), 'straining' stance.

Price (£): 10.00



Ref No: 4LS.61
Category: 'Lead' - Britain's
Description: 744 Farm-hand, male, grey jacket & trousers, black boots, yellow waistcoat, black flat cap, sowing seed from basket on moving left arm (semi-fixed), right arm outstretched

Price (£): 22.50



Ref No: 4LS.66

Category: 'Lead' - 'Mini-Models'

Description: Set: 'The Village Blacksmith' Box printed 'Made in England for Mid-West British Importers'- Farm Series No. 691. Comprises Forge, Hood, Anvil, Horse, Smith. Lack horse-shoes as shown on picture lid.

Price (£): 65.00



Ref No: 4LS.67

Category: 'Lead' - Hill (Johillco)

Description: 389 Single-Horse-drawn 2-axle Cattle Float; high-sided Waggon in dark grey with lighter grey interior, red spoked wheels, hinged tail-gate. Chestnut horse, with livestock load. Lacks driver and drover. Without box.

Price (£): 75.00



Ref No: 4LS.68

Category: 'Lead' - Hill (Johillco)

Description: Sheep, light grey, shaggy coat, standing

Price (£): 2.50



Ref No: 4LS.69

Category: 'Lead' - Hill (Johillco)

Description: 246L Footbridge (listed as River Bridge), with single Hand-rail, brown platform with green at edges, cream hand-rail. 7cm (2.5 inches)

Price (£): 6.50



Ref No: 4LS.70
Category: 'Lead' - Hill (Johillco)
Description: 246R Beehive, rectangular. White with green roof

Price (£): 8.50



Ref No: 4LS.71
Category: 'Lead' - Hill (Johillco)
Description: 258 Stout Farmer, brown suit, yellow waistcoat, pork-pie hat, brown boots, hooked stick on non-moving right arm

Price (£): 7.50



Ref No: 4LS.72
Category: 'Lead' - Hill (Johillco)
Description: 350 Sign-post, 2-arm, embossed 'Village' and 'To the Mill'

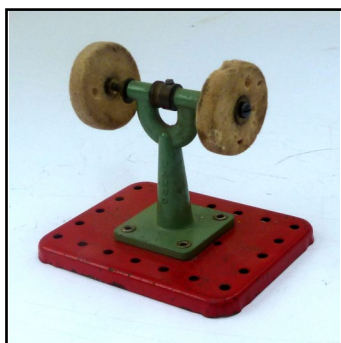
Price (£): 4.00



Ref No: 4LS.73
Category: 'Lead' - Hill (Johillco)
Description: 385 Inn-keeper (Landlord). Red waistcoat, white sleeves and apron.

Price (£): 8.00

**Ref No:** 4LS.74**Category:** 'Lead' - Roydon (believed by Hill)**Description:** Smithy Montage: Black-smith in squatting position, another in erect position holding implements, with black Shire horse in basic harness.**Price (£):** 20.00**Ref No:** 4LS.81**Category:** 'Lead' - F.G. Taylor**Description:** Hay Rick, round, tapered to centre. Qty. 2. Price each**Price (£):** 5.00**Ref No:** 4LS.82**Category:** 'Lead' - F.G. Taylor**Description:** Hay Rick, rectangular, tapered sides.**Price (£):** 6.50**Ref No:** 4LS.83**Category:** 'Lead'- Crescent**Description:** 602 (part of set) Farm-hand, green shirt, brown trousers, brown felt hat, holding pikel (pitch-fork) on non-moving right arm.**Price (£):** 7.50

**Ref No:** 4LS.86**Category:** Diecast or 'Lead'**Description:** Victorian-period Hexagonal Letter Box, with slot and finial. Red on black plinth. Height 1.75 inches (4.6cm). Unidentified issuer, possibly modern white-metal issue in the style of Johillco (not listed in Hill catalogue).**Price (£):** 4.50**Ref No:** 5S.01**Category:** Live Steam models**Description:** Mamod Type SE.1 Horizontal motion Stationary Steam Plant. Brass boiler and fittings on black firebox, all on red plinth. with meths. burner tray. (box shown on picture is to protect contents, shows incorrect model).**Price (£):** 45.00**Ref No:** 5S.02**Category:** Live Steam models**Description:** Mamod Accessory: Twin Polisher. Dual buffing wheels on central plinth. Green pillar, perforated red baseplate. Brass bushes. Good condition, without box**Price (£):** 12.50**Ref No:** 5S.03B**Category:** Live Steam models**Description:** Mamod for Meccano Horizontal Stationary Steam Engine. Yellow frame, with black firebox, polished parts. Boxed.**Price (£):** 85.00

**Ref No:** 5S.04**Category:** Live Steam models**Description:** Mamod for Meccano Horizontal Stationary Steam Engine. Silver frame with black firebox. Polished parts. With burner. Without box.**Price (£):** 80.00**Ref No:** 5S.05B**Category:** Meccano Motors**Description:** Meccano E06 6v. 'Cricket-ball' enclosed Motor. Red case. Non-reversible. Scuffed motor plates, in scuffed box. Still in working condition.**Price (£):** 12.50**Ref No:** 5S.06B**Category:****Description:** Meccano E020 20v. 'Cricket-ball' enclosed Motor. Black cover plates. Mint. Boxed. Mint.**Price (£):** 24.00**Ref No:** 5S.11B**Category:** Meccano system**Description:** Meccano Outfit No. 3, late 1930s issue in attractive blue, gold and red finish, re-strung to original specification in original box. All complete, checked against parts list. Slight play-wear on some parts, but overall in good condition. No manual, but a colour photo-copy can be provided.**Price (£):** 55.00

**Ref No:** 5S.12B**Category:** Meccano system**Description:** 1950s/1960s. Gears Outfit A. Contents threaded onto yellow stringing card. With manual. Red box**Price (£):** 35.00**Ref No:** 5S.13B**Category:** Meccano system**Description:** 1950s. Gears Outfit A. Contents threaded onto blue stringing card. With manual. Blue box**Price (£):** 30.00**Ref No:** 5S.14B**Category:** Meccano system**Description:** 1960s. Gears Outfit B. Contents in polypropylene partitioned tray. With manual. Blue box**Price (£):** 30.00**Ref No:** 5S.16B**Category:** Tinplate Novelties**Description:** Brimtoy 'Pocketoy' 9/507 tinplate-construction miniature clockwork ('wind-up') Single-deck Bus 'Greenline'. Destination 'London', With key. Boxed. Mint condition.**Price (£):** 50.00

Picture
to
follow

Ref No: 5S.17
Category: Tinplate Novelties
Description: Brimtoy 'Pocketoy' tinplate miniature clockwork-driven (wind-up) 'Luton' Van, red, 'Pocketoy Removals'. Rear door hasp replaced. Excellent condition. .

Price (£): 35.00



Ref No: 5S.18
Category: Tinplate Novelties
Description: Brimtoy 'Pocketoy' tinplate miniature clockwork-driven (wind-up) Steam Roller, mainly green with red and other detail. Excellent condition

Price (£): 30.00



Ref No: 5S.19
Category: Tinplate Novelties
Description: Dinky Toys tinplate-construction Filling & Service Station. Green base and roof, yellow building. Hole drilled in base. Otherwise superb condition. Rarely available.

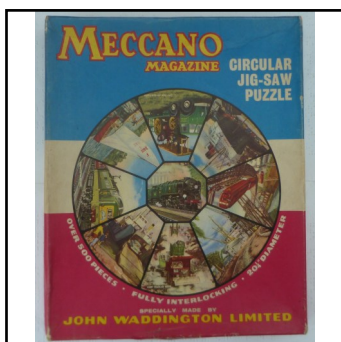
Price (£): 150.00

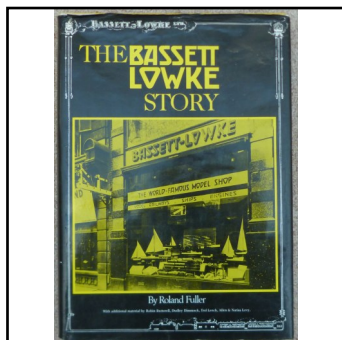
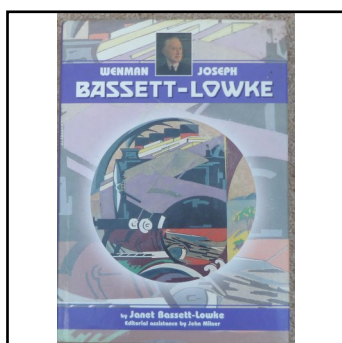
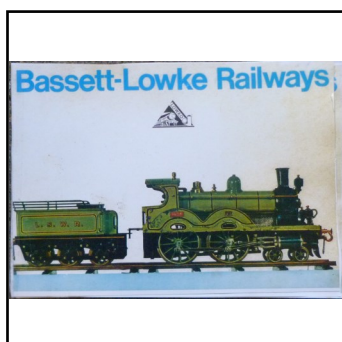
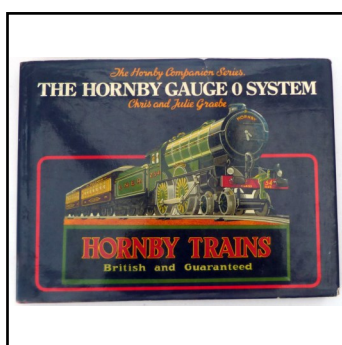


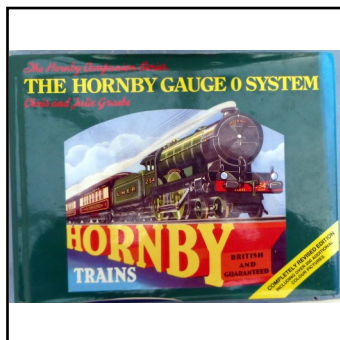
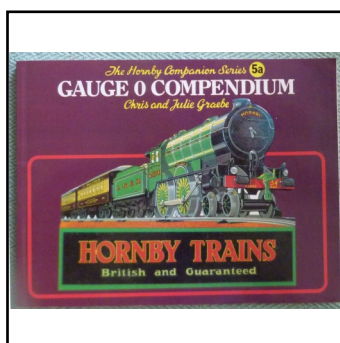
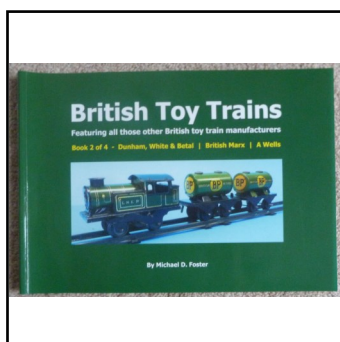
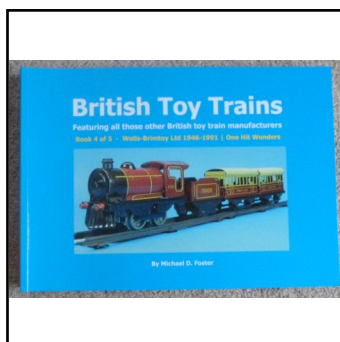
Ref No: 5S.20
Category: Tinplate Novelties
Description: Dinky Toys 44a tinplate A.A. Members' Telephone Box, black with yellow panneling, 3 destination pointers. Rarely available.

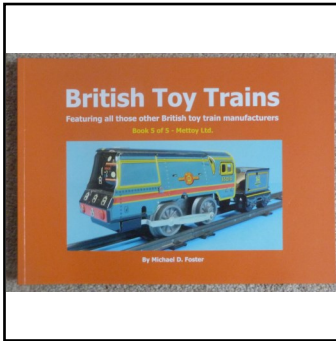
Price (£): 50.00

**Ref No:** 5S.26B**Category:** Tinplate Novelties - Tri-ang 'Minic'**Description:** Clockwork (wind-up) Double-deck Bus. First post-1945 version 60M-I. Red, with cream band at lower-upper deck level and at upper window level. Destination 177 'Mitcham' at front and rear but not over platform. 'Bovril-Ovaltine' advertisements. Tinplate wheels. Superb condition, in 'small picture' original box.**Price (£):** 100.00**Ref No:** 5S.27 (R)**Category:** Tinplate Novelties - Tri-ang 'Minic'**Description:** Clockwork (wind-up) Double-deck Bus. Version 60M-1. Red, with cream window-level bands on both lower and upper deck. No destination blinds affixed. 'Penguin-Minic Cars' advertisements. Believed excellent restoration**Price (£):** 75.00**Ref No:** 5S.28**Category:** Tinplate Novelties - Tri-ang 'Minic'**Description:** Clockwork (wind-up) Double-deck Bus, Version 60M III. Red lower, cream band at lower-upper deck level and upper window-level panels. Destination '14 Putney'. Black front mudguards, diecast wheels. 'Pedigree' advertisements. Mint condition. In original printed picture box.**Price (£):** 100.00**Ref No:** 5S.29**Category:** Tinplate Novelties - Tri-ang 'Minic'**Description:** Clockwork (wind-up) Double-deck Bus. Version 60M-IV. Overall red except for cream band at lower-upper deck level. 'Penguin Boats' & 'Minic Cars' advertisements. Black front mudguards. Moulded wheels. Destination 14 'Putney'. Lack headlights. Good condition, slight playwear.**Price (£):** 75/00

**Ref No:** 5S.30**Category:** Tinplate Novelties - Tri-ang 'Minic'**Description:** Clockwork (wind-up) Double-deck Bus. Version 60M IV. Overall red except for cream band at lower-upper deck level. Destination '14 'Putney' . 'Frog-Penguin' & 'Minic Cars' advertisements. Red front mudguards. Excellent condition.**Price (£):** 100.00**Ref No:** 5S.31**Category:** Tinplate Novelties - Tri-ang 'Minic'**Description:** Clockwork (wind-up) long-bonnet articulated Lorry, red cab/tractor unit with green semi-trailer, the latter lettered 'Minic Brewery'. With Qty. 8 wooden barrels.**Price (£):** 75.00**Ref No:** 5S.32RB**Category:** Tinplate Novelties - Tri-ang 'Minic'**Description:** Clockwork (wind-up) 4-door Limousine (Saloon), overall green, lightly scuffed. Supplied in strong reproduction end-flap box.**Price (£):** 65.00**Ref No:** 5S.36B**Category:** General novelties**Description:** Waddington's Circular Jig-saw Puzzle depicting eight 1960s Meccano Magazine Covers**Price (£):** 15.00

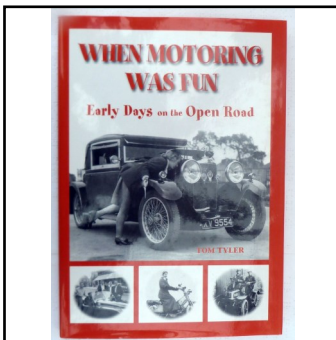
**Ref No:** 6S.01**Category:** Literature, Catalogues, etc**Description:** 'The Bassett-Lowke Story' (Roland Fuller). 351pp hardback with dustwrap, published by New Cavendish 1984. The fascinating history of the Bassett-Lowke model-making company, profusely illustrated, written by a long-serving director of the company. Excellent condition**Price (£):** 25.00**Ref No:** 6S.02**Category:** Literature, Catalogues, etc**Description:** 'Wenman James Bassett-Lowke'. 255pp hardback with dustwrap, published 1999. The life story of the founder of the famous model-making company, written by his niece. Monochrome and colour illustrations. Excellent condition.**Price (£):** 7.50**Ref No:** 6S.03**Category:** Literature, Catalogues, etc**Description:** 'Bassett-Lowke Railways'. 136pp soft-back catalogue issued 1968, when a new company had been formed to try and continue the model railway-related side of the business of the former model-making company. The enterprise did not survive, but the catalogue provides masses of useful historical and other information. Profusely illustrated. Non-art paper.**Price (£):** 5.00**Ref No:** 6S.04**Category:** Literature, Catalogues, etc**Description:** 'The Hornby Gauge 0 System' (C & J Graebe). (one of 'Hornby Companion Series' published by New Cavendish, London). First edition. With dust-wrap.**Price (£):** 20.00

**Ref No:** 6S.05**Category:** Literature, Catalogues, etc**Description:** 'The Hornby Gauge 0 System' (C. & J. Graebe). One of 'Hornby Companion Series'), published by New Cavendish, London. The definitive reference work. Revised edition with additional material and pictures. As new, with dust wrapper.**Price (£):** 30.00**Ref No:** 6S.06**Category:** Literature, Catalogues, etc**Description:** Hornby 0-gauge Compendium (C. & J. Graebe). (New Cavendish 'Hornby Series' No. 5A). 128pp limp-back. A listing of all known types within the system, with very brief descriptions. Intended to be used with the main volume.**Price (£):** 5.00**Ref No:** 6S.07**Category:** Literature, Catalogues, etc**Description:** British Toy Trains (Foster & Bowes). - Vol. 2 - Dunham White, Beta. Limp-back. As new.**Price (£):** 15.00**Ref No:** 6S.08**Category:** Literature, Catalogues, etc**Description:** British Toy Trains (Foster & Bowes). Vol. 4 - Wells-Brimtoy 1946-1991. Limp-back. As new.**Price (£):** 15.00



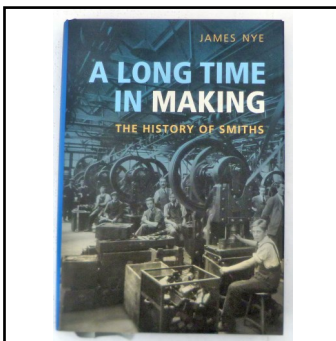
Ref No: 6S.09
Category: Literature, Catalogues, etc
Description: British Toy Trains (Foster-Bowes). Vol. 5 - Mettoy . Limp-back. As new.

Price (£): 15.00



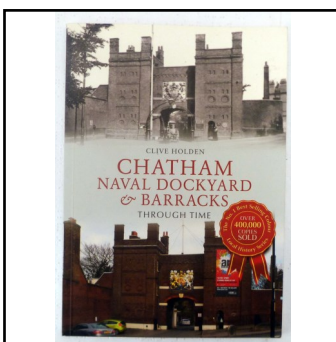
Ref No: 6S.10
Category: Literature, Catalogues, etc
Description: When Motoring was Fun'. Hardback with dustwrap.

Price (£): 4.50



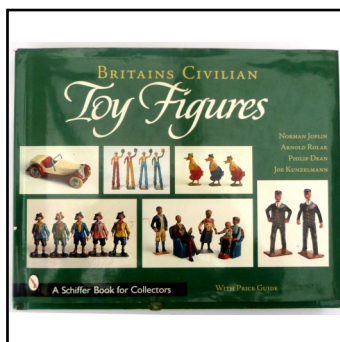
Ref No: 6S.11
Category: Literature, Catalogues, etc
Description: A Long Time in Making' (history of Smith's Industries) (Nye). 325pp h/back

Price (£): 4.50



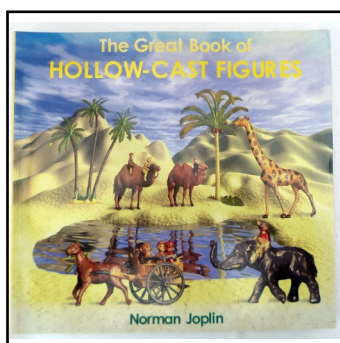
Ref No: 6S.12
Category: Literature, Catalogues, etc
Description: Chatham Naval Dockyard & Barracks, souvenir brochure

Price (£): 2.50



Ref No: 6S.13
Category: Literature, Catalogues, etc
Description: Britain's Civilian Toy Figures (Joplin etc.) 256pp h/back with dustwrap

Price (£): 20.00



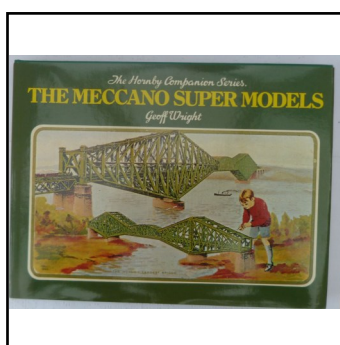
Ref No: 6S.14
Category: Literature, Catalogues, etc
Description: The Great Book of Hollow-cast Figures (Joplin). 342pp. lam. limp covers

Price (£): 15.00



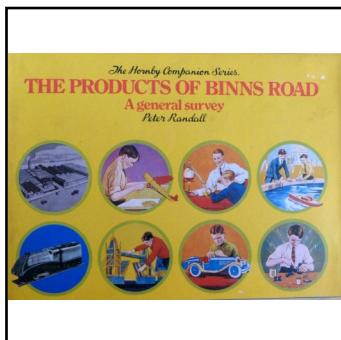
Ref No: 6S.15
Category: Literature, Catalogues, etc
Description: British Toy Boats 920 onwards (Gillham) 143pp. lam. limp back

Price (£): 10.00



Ref No: 6S.16
Category: Literature, Catalogues, etc
Description: The Meccano Super Models (G. Wright). (New Cavendish 'Hornby Series'). With dust-wrap

Price (£): 10.00

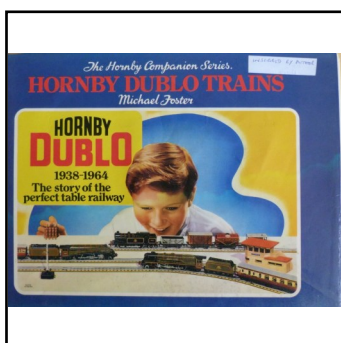


Ref No: 6S.17

Category: Literature, Catalogues, etc

Description: The Products of Binns Road (P. Randall). (New Cavendish 'Hornby Series'). With dust-wrap

Price (£): 15.00

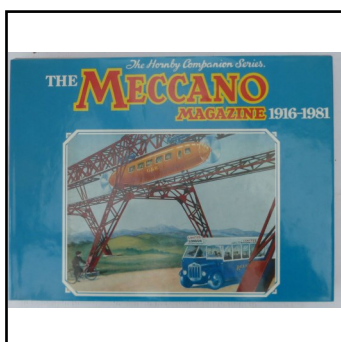


Ref No: 6S.18

Category: Literature, Catalogues, etc

Description: The Hornby Dublo System (M. Foster) (New Cavendish 'Hornby Series'). With dust-wrap

Price (£): 7.50

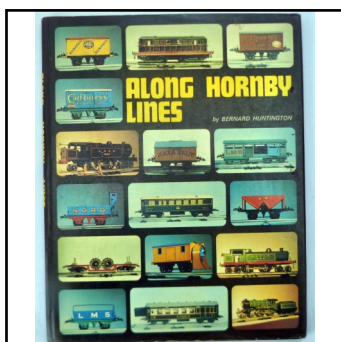


Ref No: 6S.19

Category: Literature, Catalogues, etc

Description: Meccano Magazine 1916-1981 (J. Manduca). (New Cavendish 'Hornby Series'). With dust-wrap.

Price (£): 12.50

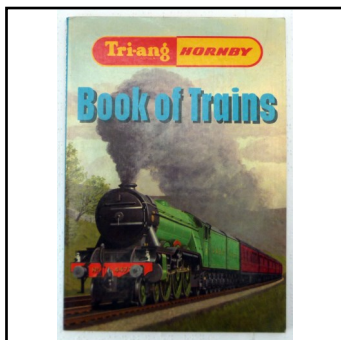
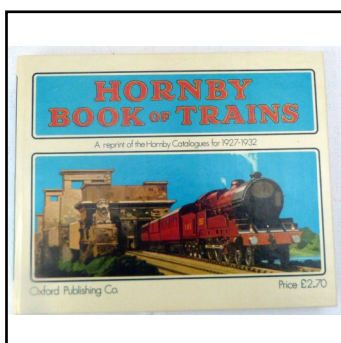
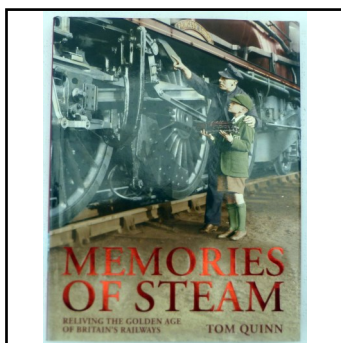
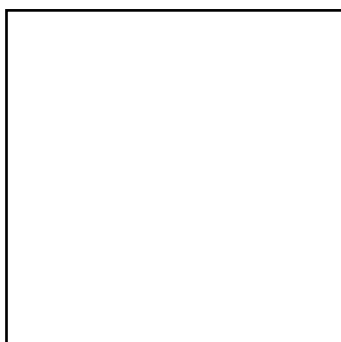


Ref No: 6S.20

Category: Literature, Catalogues, etc

Description: Along Hornby Lines (B. Huntington). Useful early post-production reference work. Monochrome. With dust-wrap

Price (£): 10.00

**Ref No:** 6S.21**Category:** Literature, Catalogues, etc**Description:** Tri-ang-Hornby Book of Trains. Adhesive-spine-bound, laminated covers**Price (£):** 5.00**Ref No:** 6S.22**Category:** Literature, Catalogues, etc**Description:** Hornby Book of Trains. OPC reprint of 1927-1932 issues. Monochrome only. First pages of originals not reproduced. Laminated board covers**Price (£):** 7.50**Ref No:** 6S.23**Category:** Literature, Catalogues, etc**Description:** 'Memories of Steam' (compiled by Tom Quinn). Publ. David & Charles 2009. 251pp 'coffee-table' format. Mainly monochrome pictures (a little colour) with appended text. Very nostalgic of the steam era.**Price (£):** 3.50**Ref No:****Category:****Description:** end of supplement**Price (£):**